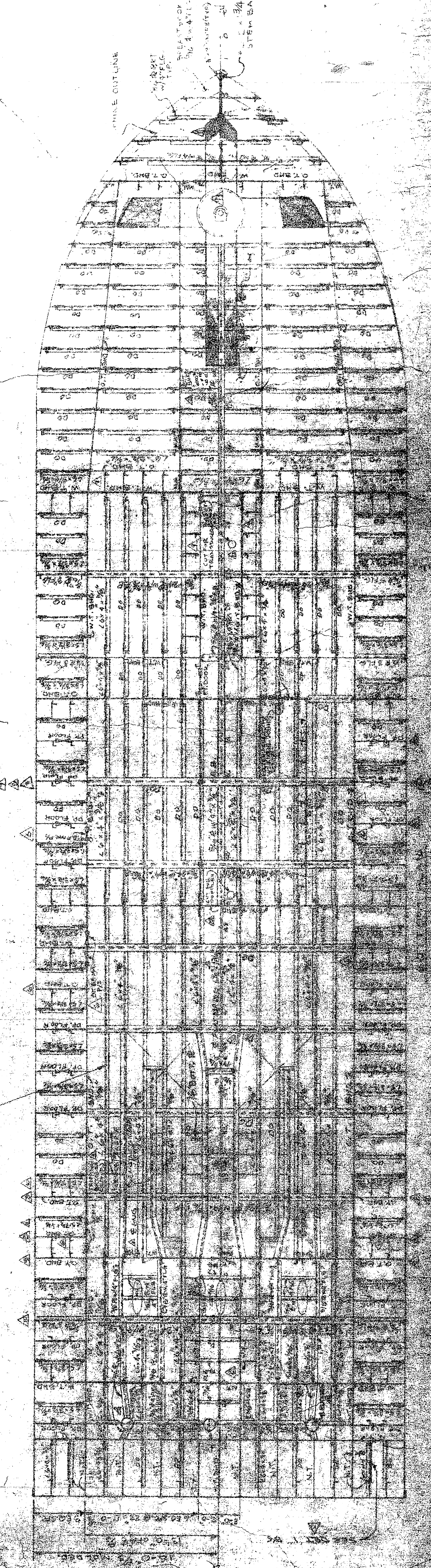
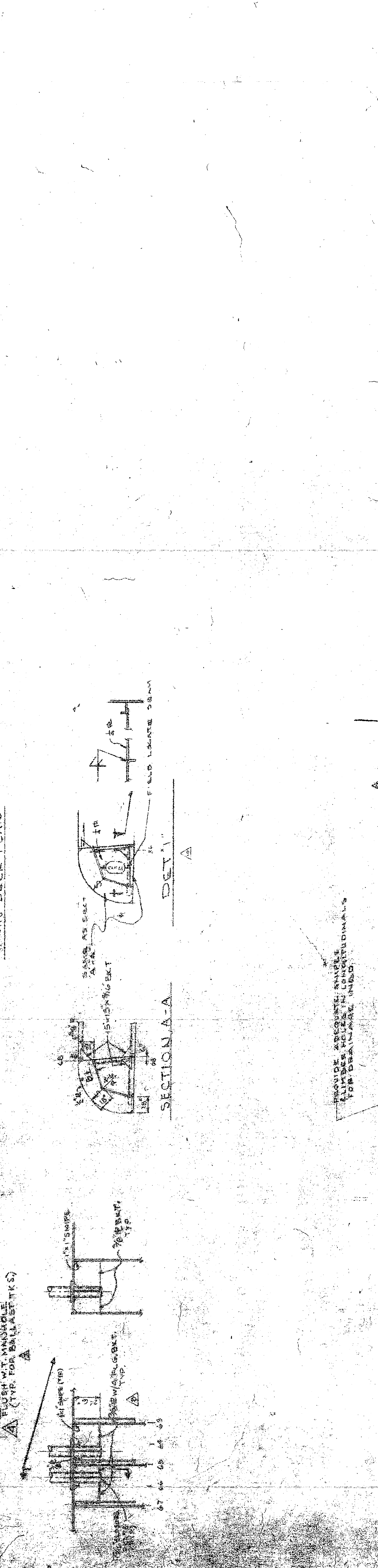
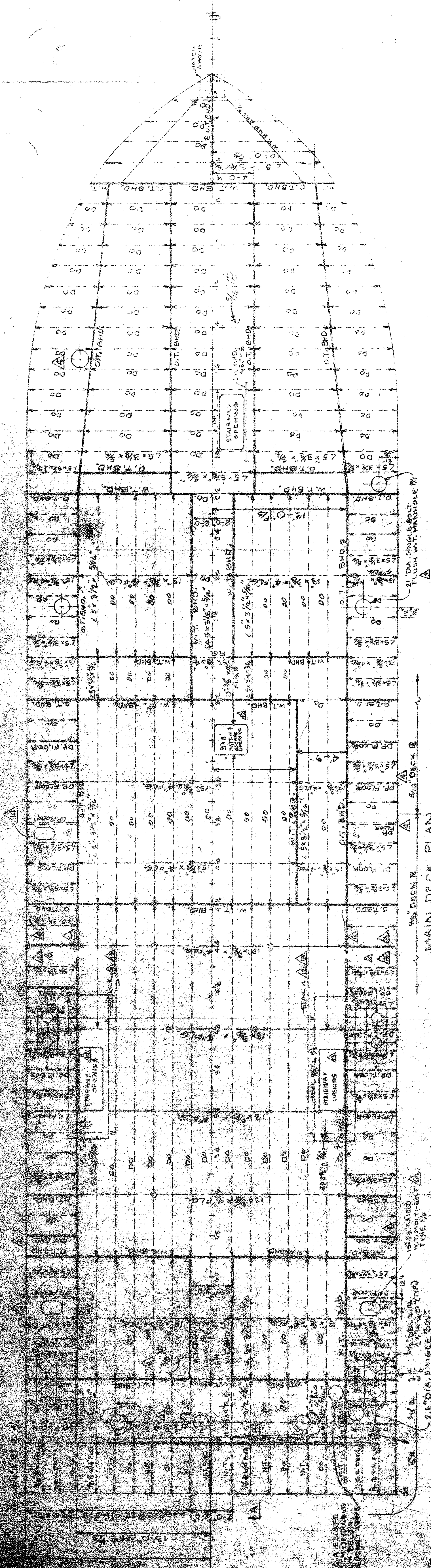


REV. NO.	DESCRIPTION	BY	DATE
1	MAIN DECK, AS SHOWN ON DRAWING, ADDED MAIN DECK BEHIND FORWARD BULKHEAD, AS SHOWN ON DRAWING. GENERAL REVISION.	PH	12/8
2	REV. DIMS FOR TUBEWATER MARKED UP PER REV. 1.	PH	1/8
3	REV. DIMS FOR TUBEWATER MARKED UP PER REV. 1.	PH	1/8
4	REV. DIMS FOR TUBEWATER MARKED UP PER REV. 1.	PH	1/8
5	REV. DIMS FOR TUBEWATER MARKED UP PER REV. 1.	PH	1/8
6	REV. DIMS FOR TUBEWATER MARKED UP PER REV. 1.	PH	1/8
7	REV. DIMS FOR TUBEWATER MARKED UP PER REV. 1.	PH	1/8
8	REV. DIMS FOR TUBEWATER MARKED UP PER REV. 1.	PH	1/8
9	REV. DIMS FOR TUBEWATER MARKED UP PER REV. 1.	PH	1/8
10	REV. DIMS FOR TUBEWATER MARKED UP PER REV. 1.	PH	1/8
11	REV. DIMS FOR TUBEWATER MARKED UP PER REV. 1.	PH	1/8
12	REV. DIMS FOR TUBEWATER MARKED UP PER REV. 1.	PH	1/8
13	REV. DIMS FOR TUBEWATER MARKED UP PER REV. 1.	PH	1/8
14	REV. DIMS FOR TUBEWATER MARKED UP PER REV. 1.	PH	1/8
15	REV. DIMS FOR TUBEWATER MARKED UP PER REV. 1.	PH	1/8
16	REV. DIMS FOR TUBEWATER MARKED UP PER REV. 1.	PH	1/8
17	REV. DIMS FOR TUBEWATER MARKED UP PER REV. 1.	PH	1/8
18	REV. DIMS FOR TUBEWATER MARKED UP PER REV. 1.	PH	1/8
19	REV. DIMS FOR TUBEWATER MARKED UP PER REV. 1.	PH	1/8
20	REV. DIMS FOR TUBEWATER MARKED UP PER REV. 1.	PH	1/8
21	REV. DIMS FOR TUBEWATER MARKED UP PER REV. 1.	PH	1/8
22	REV. DIMS FOR TUBEWATER MARKED UP PER REV. 1.	PH	1/8
23	REV. DIMS FOR TUBEWATER MARKED UP PER REV. 1.	PH	1/8
24	REV. DIMS FOR TUBEWATER MARKED UP PER REV. 1.	PH	1/8
25	REV. DIMS FOR TUBEWATER MARKED UP PER REV. 1.	PH	1/8
26	REV. DIMS FOR TUBEWATER MARKED UP PER REV. 1.	PH	1/8
27	REV. DIMS FOR TUBEWATER MARKED UP PER REV. 1.	PH	1/8
28	REV. DIMS FOR TUBEWATER MARKED UP PER REV. 1.	PH	1/8
29	REV. DIMS FOR TUBEWATER MARKED UP PER REV. 1.	PH	1/8
30	REV. DIMS FOR TUBEWATER MARKED UP PER REV. 1.	PH	1/8
31	REV. DIMS FOR TUBEWATER MARKED UP PER REV. 1.	PH	1/8
32	REV. DIMS FOR TUBEWATER MARKED UP PER REV. 1.	PH	1/8
33	REV. DIMS FOR TUBEWATER MARKED UP PER REV. 1.	PH	1/8
34	REV. DIMS FOR TUBEWATER MARKED UP PER REV. 1.	PH	1/8
35	REV. DIMS FOR TUBEWATER MARKED UP PER REV. 1.	PH	1/8
36	REV. DIMS FOR TUBEWATER MARKED UP PER REV. 1.	PH	1/8
37	REV. DIMS FOR TUBEWATER MARKED UP PER REV. 1.	PH	1/8
38	REV. DIMS FOR TUBEWATER MARKED UP PER REV. 1.	PH	1/8
39	REV. DIMS FOR TUBEWATER MARKED UP PER REV. 1.	PH	1/8
40	REV. DIMS FOR TUBEWATER MARKED UP PER REV. 1.	PH	1/8
41	REV. DIMS FOR TUBEWATER MARKED UP PER REV. 1.	PH	1/8
42	REV. DIMS FOR TUBEWATER MARKED UP PER REV. 1.	PH	1/8
43	REV. DIMS FOR TUBEWATER MARKED UP PER REV. 1.	PH	1/8
44	REV. DIMS FOR TUBEWATER MARKED UP PER REV. 1.	PH	1/8
45	REV. DIMS FOR TUBEWATER MARKED UP PER REV. 1.	PH	1/8
46	REV. DIMS FOR TUBEWATER MARKED UP PER REV. 1.	PH	1/8
47	REV. DIMS FOR TUBEWATER MARKED UP PER REV. 1.	PH	1/8
48	REV. DIMS FOR TUBEWATER MARKED UP PER REV. 1.	PH	1/8
49	REV. DIMS FOR TUBEWATER MARKED UP PER REV. 1.	PH	1/8
50	REV. DIMS FOR TUBEWATER MARKED UP PER REV. 1.	PH	1/8
51	REV. DIMS FOR TUBEWATER MARKED UP PER REV. 1.	PH	1/8
52	REV. DIMS FOR TUBEWATER MARKED UP PER REV. 1.	PH	1/8
53	REV. DIMS FOR TUBEWATER MARKED UP PER REV. 1.	PH	1/8
54	REV. DIMS FOR TUBEWATER MARKED UP PER REV. 1.	PH	1/8
55	REV. DIMS FOR TUBEWATER MARKED UP PER REV. 1.	PH	1/8
56	REV. DIMS FOR TUBEWATER MARKED UP PER REV. 1.	PH	1/8
57	REV. DIMS FOR TUBEWATER MARKED UP PER REV. 1.	PH	1/8
58	REV. DIMS FOR TUBEWATER MARKED UP PER REV. 1.	PH	1/8
59	REV. DIMS FOR TUBEWATER MARKED UP PER REV. 1.	PH	1/8
60	REV. DIMS FOR TUBEWATER MARKED UP PER REV. 1.	PH	1/8
61	REV. DIMS FOR TUBEWATER MARKED UP PER REV. 1.	PH	1/8
62	REV. DIMS FOR TUBEWATER MARKED UP PER REV. 1.	PH	1/8
63	REV. DIMS FOR TUBEWATER MARKED UP PER REV. 1.	PH	1/8
64	REV. DIMS FOR TUBEWATER MARKED UP PER REV. 1.	PH	1/8
65	REV. DIMS FOR TUBEWATER MARKED UP PER REV. 1.	PH	1/8
66	REV. DIMS FOR TUBEWATER MARKED UP PER REV. 1.	PH	1/8
67	REV. DIMS FOR TUBEWATER MARKED UP PER REV. 1.	PH	1/8
68	REV. DIMS FOR TUBEWATER MARKED UP PER REV. 1.	PH	1/8
69	REV. DIMS FOR TUBEWATER MARKED UP PER REV. 1.	PH	1/8
70	REV. DIMS FOR TUBEWATER MARKED UP PER REV. 1.	PH	1/8
71	REV. DIMS FOR TUBEWATER MARKED UP PER REV. 1.	PH	1/8
72	REV. DIMS FOR TUBEWATER MARKED UP PER REV. 1.	PH	1/8
73	REV. DIMS FOR TUBEWATER MARKED UP PER REV. 1.	PH	1/8
74	REV. DIMS FOR TUBEWATER MARKED UP PER REV. 1.	PH	1/8
75	REV. DIMS FOR TUBEWATER MARKED UP PER REV. 1.	PH	1/8
76	REV. DIMS FOR TUBEWATER MARKED UP PER REV. 1.	PH	1/8
77	REV. DIMS FOR TUBEWATER MARKED UP PER REV. 1.	PH	1/8
78	REV. DIMS FOR TUBEWATER MARKED UP PER REV. 1.	PH	1/8
79	REV. DIMS FOR TUBEWATER MARKED UP PER REV. 1.	PH	1/8
80	REV. DIMS FOR TUBEWATER MARKED UP PER REV. 1.	PH	1/8
81	REV. DIMS FOR TUBEWATER MARKED UP PER REV. 1.	PH	1/8
82	REV. DIMS FOR TUBEWATER MARKED UP PER REV. 1.	PH	1/8
83	REV. DIMS FOR TUBEWATER MARKED UP PER REV. 1.	PH	1/8
84	REV. DIMS FOR TUBEWATER MARKED UP PER REV. 1.	PH	1/8
85	REV. DIMS FOR TUBEWATER MARKED UP PER REV. 1.	PH	1/8
86	REV. DIMS FOR TUBEWATER MARKED UP PER REV. 1.	PH	1/8
87	REV. DIMS FOR TUBEWATER MARKED UP PER REV. 1.	PH	1/8
88	REV. DIMS FOR TUBEWATER MARKED UP PER REV. 1.	PH	1/8
89	REV. DIMS FOR TUBEWATER MARKED UP PER REV. 1.	PH	1/8
90	REV. DIMS FOR TUBEWATER MARKED UP PER REV. 1.	PH	1/8
91	REV. DIMS FOR TUBEWATER MARKED UP PER REV. 1.	PH	1/8
92	REV. DIMS FOR TUBEWATER MARKED UP PER REV. 1.	PH	1/8
93	REV. DIMS FOR TUBEWATER MARKED UP PER REV. 1.	PH	1/8
94	REV. DIMS FOR TUBEWATER MARKED UP PER REV. 1.	PH	1/8
95	REV. DIMS FOR TUBEWATER MARKED UP PER REV. 1.	PH	1/8
96	REV. DIMS FOR TUBEWATER MARKED UP PER REV. 1.	PH	1/8
97	REV. DIMS FOR TUBEWATER MARKED UP PER REV. 1.	PH	1/8
98	REV. DIMS FOR TUBEWATER MARKED UP PER REV. 1.	PH	1/8
99	REV. DIMS FOR TUBEWATER MARKED UP PER REV. 1.	PH	1/8
100	REV. DIMS FOR TUBEWATER MARKED UP PER REV. 1.	PH	1/8



- DESIGN IN CONFORMANCE WITH THE FOLLOWING:
 - CLASS ABS, A, B AND AMS
 - FULL DECK SERVICE
 - 2007 CCS RULES
- USCG ADMEASUREMENTS FOR VESSELS TO BE DOCUMENTED TO MINERAL OIL EXPLORATION SERVICE. TONNAGE TO BE LESS THAN 300 GROSS TONS.
- USCG'S HANDBOOK ON SANITATION OF VESSEL CONSTRUCTION.

MISSISSIPPI TOWNSHIP CORP. HULL # 30

DESIGN ASSOCIATES, INC.
 NAVAL ARCHITECTS
 MARINE ENGINEERS
 NEW ORLEANS, LA

TIDEWATER MARINE SERVICE

145-555-0000 SEULIN VESSEL

MAIN DECK AND BOTTOM SCANTLING

Drawn: S.S. Date: 11/11/11
 Checked: A.L.S.
 Title: 145-555-0000 SEULIN VESSEL
 Sheet: 01 Drawing No.: 2002-2 Revision: Mark